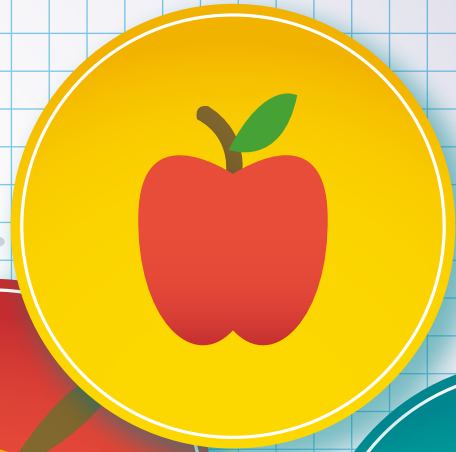


# Commitment

BETWEEN SCHOOL & PARENTS





# MUNICIPAL PRIMARY SCHOOL DENDERLEEuw

*Direction:* Geert Monsaert

Our school counts 2 *care teachers*: Miss Annick and Miss Gwen.

We organise 2 *parent-teacher meetings* a school year for our toddlers and our primary school children. These dates will be communicated at the start of the school year.

School's *contact details*:

**GBS Welle**

Welleplein 3, 9473 Welle  
053 665 393

**GBS Iddergem**

Leliestraat 1, 9472 Iddergem  
053 667 247

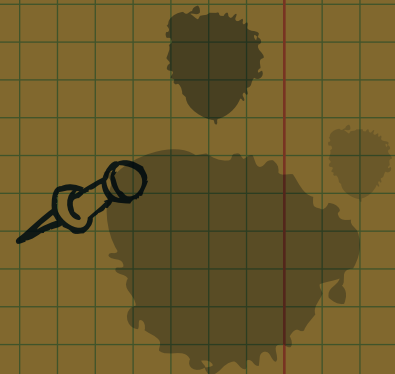
[gemeenteschoolwelle@telenet.be](mailto:gemeenteschoolwelle@telenet.be)

[gemeenteschooliddergem@telenet.be](mailto:gemeenteschooliddergem@telenet.be)

[www.gbs-denderleeuw.be](http://www.gbs-denderleeuw.be)

Our *school hours*:

	<b>morning</b>	<b>afternoon</b>
<b>Monday</b>	8:40 – 12:15	13:35 – 15:30
<b>Tuesday</b>	8:40 – 12:15	13:35 – 15:30
<b>Wednesday</b>	8:40 – 12:15	/
<b>Thursday</b>	8:40 – 12:15	13:35 – 15:30
<b>Friday</b>	8:40 – 12:15	13:35 – 15:30



# MUNICIPAL PRIMARY SCHOOL DENDERLEEUEW

## AN AFFORDABLE SCHOOL

As a primary school, we are bound by the maximum invoice. This means the contribution paid by parents to the school is limited and fixed by law. In addition, our school makes extra efforts to be an affordable school for all children and parents:

- buying a drink at school is not mandatory.
- we encourage the use of a water bottle and provide free tap water.
- we implement a birthday celebration policy at school: children are not allowed to bring along individual treats in class.
- we friendly ask parents not to buy gifts for teachers at the end of the school year. At our school, a word of thanks on a note, card or drawing, is equally appreciated by our teachers!
- we accept the UIT pass at social rate.

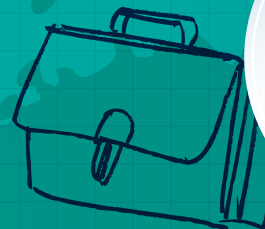
### *How do we invoice?*

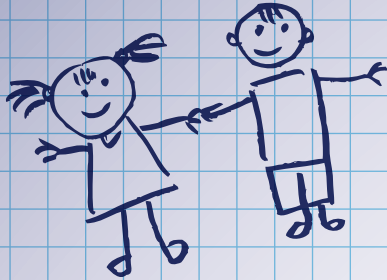
We invoice on a monthly base.

### *Saving plan for greater outings*

Parents can join a for:

- forest classes (4th grade)
- sea classes (5th grade)
- ski classes (6th grade)





**This commitment was developed by the**  
6 primary schools of the municipality of Denderleeuw  
**and Onderwijsopbouwwerk Denderleeuw.**

*The text in this booklet is a literal translation of the Dutch version.*

Denderleeuw  
Vertrouwde schakel

